



**Board Meeting Agenda  
January 26th at 6:30 pm**

<b>In Person</b>	Irrigon Library, 490 NE Main Ave, Irrigon, OR 97844
<b>Microsoft Teams</b>	<a href="#">Join the meeting now</a> Meeting ID: 291 843 218 626 65 Passcode: GM9Kd2qE

- 1. Call to Order and Pledge of Allegiance**
- 2. Public Comment (Maximum of 3 minutes per person. Maximum of 30 minutes for comments)**
- 3. Approval of Meeting Minutes**
  - A. November 24th, 2025 meeting as there was no meeting in December 2025.
- 4. Consent Agenda**
  - A. CEO Dashboard – Bob Houser
  - B. Quality Report- Dr. Emily Jack
  - C. EMS Stats – Bob Houser
- 5. Reports**
  - A. CEO Report – Bob Houser
  - B. Financial Report – Rick Worden, CFO
- 6. Med Staff Report –**
  - A. Approve Staff Privileges - Re-Appointment of:**
    1. None at this time.
  - B. Approve Staff Privileges - Appointment of:**
    1. Raeann Bourscheid, MD, OHSU telestroke
- 7. Old Business**
  - A. Update on district “church building”, wishes of the board in pricing?
  - B. Selection process of a new board member, wishes of the board?
- 8. New Business**
  - A. CEO Candidates / time table
  - B. Site visit by Dr. Brad Stoker, January 31<sup>st</sup>, 2026

**Promise of Excellence**

**Compassion:** Being motivated with a desire to assist patients and staff with empathy and kindness and committed to going the extra mile to ensure patients and staff feel comfortable and welcomed.

**Respect:** Recognizing and valuing the dignity and uniqueness of everyone. Respect creates a work environment based on teamwork, encouragement, trust, concern, honesty, and responsive communication among all employees and our patients.

**Integrity:** Encompassing honesty and consistently adhering to the principles of professionalism and accountability with our patients, fellow employees, and community partners. Integrity is at the heart of everything we do.

**Excellence:** Creating standards of performance that surpass ordinary expectations. We want to make this the place where patients want to come, our providers want to practice, and people want to work!

- C. Approval and signature of the Plan of Correction found and reported in our audit of June 30, 2025.
- D. Approval of new organizational chart.

E. Approval of Resolution # 152-0126 additional signature on bank accounts.

- 9. Executive Session:** Members of the news media may attend executive sessions, with limited exceptions. News media are instructed not to report about what happened in executive sessions.
- A. Discussion of litigation or litigation likely to be filed. To be held under ORS 192.660(22)(h)
  - B. Discussion of negotiating district real property transactions to be held under ORS 192.660(2)(e)

## **10. Return to Open Session**

## **11. Adjourn**

- 12. Next meeting to be held February 23<sup>rd</sup> @ Ione Fire Station, 140 W. Main Street, Ione, OR. 97836.**

---

## **Promise of Excellence**

**Compassion:** Being motivated with a desire to assist patients and staff with empathy and kindness and committed to going the extra mile to ensure patients and staff feel comfortable and welcomed.

**Respect:** Recognizing and valuing the dignity and uniqueness of everyone. Respect creates a work environment based on teamwork, encouragement, trust, concern, honesty, and responsive communication among all employees and our patients.

**Integrity:** Encompassing honesty and consistently adhering to the principles of professionalism and accountability with our patients, fellow employees, and community partners. Integrity is at the heart of everything we do.

**Excellence:** Creating standards of performance that surpass ordinary expectations. We want to make this the place where patients want to come, our providers want to practice, and people want to work!

<b>Meeting</b>	Board of Directors		
<b>Date / Time</b>	November 24, 2026, 6:30 pm	<b>Location</b>	Port of Morrow, Sand Hollow Conference Room 2 Marine Dr NE, Boardman, OR 97818 Microsoft Teams
<b>Chair</b>	Janet Greenup	<b>Recorder</b>	Julie Baker
<b>Board Members</b>	<b>Present:</b> Russel Nichols, Stephen Munkers, Annetta Spicer, Jason Hanna		
<b>Attendees</b>	<b>Staff:</b> Bob Houser, Julie Baker, Jodi Ferguson, Rick Worden, Kirsten Espinola, Danielle Hoeft, LeAnn Wright, Jamie Houck, Lisa Spencer, Katelin Tellechea, Tina Montgomery, Natalia Wight, Staci Hedman, Dr. Emily Jack, Caroline Scrivner		
<b>Guests</b>	Eric Volk, WIPFLI		

<p><b>Mission</b> Bring essential health services to our rural communities that meet the unique needs of the people we serve.</p>	<p><b>Vision</b> Be the first choice for quality, compassionate care, and lead the way in promoting wellness and improving health in our communities.</p>	<p><b>Values</b> Integrity, Compassion, Quality, Respect, Financial Responsibility</p>
---	---	--

Agenda Item	Minutes
<b>1. Call to Order &amp; Pledge of Allegiance</b>	Chair Greenup called the meeting to order a 6:40 pm
<b>2. Public Comment</b>	<ul style="list-style-type: none"> <li>• Jonathan Tallman: Asked the Board to not make Executive Session decisions until another time</li> <li>• Mike Hughes: Discussed the building of a helipad at Boardman Fire through in-kind donations, applying for grants and wanted to mentioned the opportunity, with a need of \$75,000.</li> <li>• Brenda Proffit: City Council Member and resident, asked if Board had ideas on improving presence in Boardman, such as Occupational Health. She also asked about potential of Senior Living, similar to what is currently being offered in Heppner.</li> <li>• Susan Booher: Discussed Occupational Health was done in the North end clinics in the past.</li> <li>• Karen Pettigrew, Boardman: Discussed past donations to Columbia River Health. Houser addressed this, stating they would like to work and collaborate with CRH to provide services and not provide duplicate services. He will continue to meet with leaders at CRH and Good Shepherd.</li> <li>• Sheryl Tallman: Discussed foot clinics in Boardman that used to occur. It was addressed this service has started again.</li> <li>• Board member Russ Nichols: Stated that everyone realizes we are on the same page, the Board wants discussion to work together.</li> <li>• Bob Houser, CEO: Stated the community can continue to share ideas for needs in Boardman by emailing the District at <a href="mailto:community@moco hd.org">community@moco hd.org</a></li> </ul>

<p><b>3. Approval of Meeting Minutes</b> A. October 27, 2025</p>	<p><b>MOTION:</b> Russ Nichols moved to approve the minutes for the October 27, 2025 meeting. Annetta Spicer seconded the motion. The motion passed unanimously by all Board members.</p>
<p><b>4. Presentation of Cost Report 2024-2025 – Eric Volk, WIPFLI</b></p>	<p>Eric Volk presented to 2024-2025 Cost Report for the District. <b>MOTION:</b> Russ Nichols moved to approve the 2024-2025 Cost Report as presented. Jason Hanna seconded the motion. The motion passed unanimously by all Board members.</p>
<p><b>5. Consent Agenda</b> A. CEO Dashboard – Bob Houser B. Quality Report – Dr. Seals C. EMS Stats – Bob Houser</p>	<p>A. Bob Houser discussed the CEO Dashboard (see packet), noting the improvement in the turnover rate and vacancy rate. He discussed two open positions with the District. Houser discussed Days Cash on Hand, stating the number is lower than he would like, but it is improving as of three weeks ago, adding the same with Days in A/R in Cerner.  Dr. Jack asked a question regarding total clinic visits on the CEO Dashboard, do they include behavioral health visits or not. Julie Baker responded these numbers only reflected visits with medical providers, not visits with BH providers or Medical Assistants. The Board requested to add Behavioral Health visits to the Dashboard totals.  B. No Quality Report presented this month.  C. Jodi Ferguson reviewed the EMS Stats (see packet).</p>
<p><b>6. Reports</b> A. CEO Update – Bob Houser B. Financial Report – Jodi Ferguson</p>	<p>A. Houser provided a CEO Update (see packet). He noted that Jeremy Filip, Lab Technical Supervisor had resigned as he was moving out of the area, Diana Sharp has been hired to fill this role starting in December 2025. He discussed the CEO position will be closing at midnight tonight (11-24-2025), as of this time there were 101 applicants. He will review applicants, arrowing approximately 40 to the second round, and continue to narrow down candidates, the Board will become involved in the review and interview process after they have been narrowed down more. Houser and the Board discussed key aspects of a strong potential candidate, they would like to see a candidate with experience in a Critical Access Hospital, Rural Health Clinic, willing to communicate with the public, be part of the community and collaborate.  Houser presented a Community Benefit Request from the Heppner Fire Department for a new AED. The Board discussed the request. <b>MOTION:</b> Annetta Spicer motioned to grant the request form the Heppner Fire Department for a new AED. Russ Nichols seconded the motion. The motion passed unanimously by all Board members.  Houser discussed he met Mary Killion with the Boardman Food Pantry to tour the MCHD Boardman Ambulance Hall for their use. which was approved by the Board in the October meeting. Their Board members and volunteers will be cleaning the building and they would like to be able to use all of the space as their temporary location, as Houser recommended.</p>

	<p><b>MOTION:</b> Annetta Spicer motioned to allow the District provide use of the entire space and utilities to the Boardman Food Pantry as their temporary location. Jason Hanna seconded the motion. The motion passed unanimously by all Board members.</p> <p>Houser provided an update on the upcoming MCHD Christmas party, which will be held on December 12, 2025 at the Gilliam &amp; Bisbee building in Heppner. The Board is encouraged to attend. Chair Greenup agreed to speak at the event.</p> <p>Houser updated the interior double doors located in the South corridor of Pioneer Memorial Hospital have been replaced. The outside will be replaced next. Chair Greenup requested a visitation.</p> <p>B. Jodi Ferguson presented the Financial Report (see packet). She noted the District did not need to draw on their available loan. Discussion held regarding losses and how bringing in new providers and services will have an effect on revenue.</p>
<p><b>7. Medical Staff Report</b></p> <ul style="list-style-type: none"> <li>A. Approve Staff Privileges – None</li> <li>B. Approve Staff Privileges - Appointment of:             <ol style="list-style-type: none"> <li>1. Shelby Payne, MD – Radiology</li> <li>2. Leonardo Campos, MD – Radiology</li> <li>3. Michelle Black, MD – Radiology</li> <li>4. Blake Hansen, MD – Radiology</li> <li>5. Jeremy Austin, MD – ER</li> <li>6. Emily Jack, MD – Family Medicine</li> <li>7. Lori Lammers, APRN- NP</li> </ol> </li> </ul>	<ul style="list-style-type: none"> <li>A. None</li> <li>B. Bob stated staff privileges to review include four radiologists, one ER provider and two clinic providers. He noted Dr. Jeremy Austin, MD is pending Medicaid enrollment. Nichols stated he had no concerns with the files.</li> </ul> <p><b>MOTION:</b> Russ Nichols motioned to approve staff privileges as presented. Annetta Spicer seconded the motion. The motion passed unanimously by all Board members.</p>
<p><b>8. Old Business</b></p> <ul style="list-style-type: none"> <li>A. Church building has been listed with Sykes Realty in Heppner.</li> <li>B. Appointment of board committee to review final CEO applicants</li> </ul>	<ul style="list-style-type: none"> <li>A. Houser stated the building had been shown five times by Sykes Realty. The furnace had been recently looked at by All American Heating and Cooling.</li> <li>B. Houser asked the Board how they would like to proceed with appointment of a Board committee to review final CEO candidates. Discussion held by the Board.</li> </ul>

	<p><b>MOTION:</b> Russ Nichols nominated Janet Greenup and Jason Hanna to serve as the candidate review team for the CEO position. Annetta Spicer seconded the motion. The motion passed unanimously by all Board members.</p>
<p><b>9. New Business</b></p> <ul style="list-style-type: none"> <li>A. CEO Candidates</li> <li>B. Approval of ONA contract – To be discussed in Executive Session, voted on in open session.</li> </ul>	<p>A. Houser had reviewed the CEO candidate update in his CEO Report.</p> <p>B. Bob discussed the Oregon Nurses Association (ONA) Contract, stating it had been provided to the Board members. He added it can be discussed in Executive Session and voted on in Open Session. Houser said discussions with ONA started around January 2025. He said he had served on the current negotiating team with Sheryl Angel and Katelin Tellechea, and the negotiating team for ONA included Christine Houck (ONA), Kathleen Greenup and Kalah Barnett. He said both teams agreed to the terms stipulated in the agreement. It will be up for renegotiation June 30, 2027.</p> <p><b>MOTION:</b> Russ Nichols motioned to approve the Oregon Nurses Association Contract as presented. Jason Hanna seconded the motion. The motion passed unanimously by all Board members.</p>
<p><b>10. Executive Session</b></p>	<p>Chair Greenup called Executive Session to order at 7:48 pm under:</p> <ul style="list-style-type: none"> <li>A. Discussion of litigation or litigation likely to be filed. To be held under ORS 192.660(22)(h)</li> <li>B. Discussion of continued negotiations involving matters of lease agreement. To be held under ORS 192.660(2) (e).</li> </ul> <p>Members of the news media may attend Executive Sessions, with limited exceptions. News media are instructed not to report about what happened in Executive Sessions.</p>
<p><b>11. Return to Open Session</b></p>	<p>The Board returned to open session, no items were discussed or voted on.</p>
<p><b>12. Adjourn</b></p>	<p>With no further business to come before the Board, regular session adjourned at 8:06 pm</p> <p>Minutes taken and submitted by Julie Baker. Approved _____.</p>

**Promise of Excellence**

**Compassion:** Being motivated with a desire to assist patients and staff with empathy and kindness and committed to going the extra mile to ensure patients and staff feel comfortable and welcomed.

**Respect:** Recognizing and valuing the dignity and uniqueness of everyone. Respect creates a work environment based on teamwork, encouragement, trust, concern, honesty, and responsive communication among all employees and our patients.

**Integrity:** Encompassing honesty and consistently adhering to the principles of professionalism and accountability with our patients, fellow employees, and community partners. Integrity is at the heart of everything we do.

**Excellence:** Creating standards of performance that surpass ordinary expectations. We want to make this the place where patients want to come, our providers want to practice, and people want to work!



**January 2026 Meeting (December Stats)**

HUMAN RESOURCES	
<b>Turnover Rate</b> (Rolling 3 Months: October-November-December)	10.3%
<b>Vacancy Rate</b>	11.60%
<b>Number of Open Positions</b>	13
<b>Newly Created Open Positions</b>	2

FINANCIAL	
<b>Days Cash on Hand</b>	52
<b>Days in AR Cerner</b>	83
<b>Days in AR (All)</b>	96

Goal ≥ 90

Goal ≤ 60

The annual total separations rate for health care and social assistance for August 2025 was 3.1 (Bureau of Labor Statistics).

RURAL HEALTH CLINICS				
MEASURE	PMC	ICC	IMC	BIC
<b>Third Next Available</b> (Current Month)	19	5	10	NA
<b>Total Visits</b> (Previous Month)	189	180	328	32
<b>Total (BH) Visits</b> (Previous Month)	38	NA	52	NA

"Third Next Available" is an industry standard measurement of primary care access. It is defined as the average length of time in days between the day a patient makes a request for an appointment with a provider and the third available appointment for a new patient physical, routine exam, or return visit exam. Values shown are clinic averages.

PIONEER MEMORIAL HOSPITAL	
<b>Hospital Admit Days (IP, SS, NSS, OBS, R)</b> (Previous Month)	197
<b>Emergency Department Visits</b> (Previous Month)	121
<b>Hospital Outpatient Visits</b> (Previous Month)	283

HOME HEALTH & HOSPICE	
<b>Hospice Days</b> (Previous Month)	142
<b>Home Health Visits</b> (Previous Month)	103

**NRC Patient Experience Real-Time Survey**

The real-time survey platform was implemented on June 1st, 2025. Stats show a cumulative report of all responses since implementation. Starting on June 1, 2026 stats will show a 12 month rolling period. Patients are contacted via text, e-mail, or phone with a 24 hour delay between attempts to give them the opportunity to complete the survey. Patients contact information must be captured correctly in CERNER to receive the survey.

What is the NRC Net Promoter Score? It is a metric that reflects how likely a patient is to recommend a healthcare organization to others.

Would you recommend this provider's office to your family and friends? (Net			
	October	June 1, 2025 to November	December
<b>Boardman Immediate Care</b>	66.7% Responses = 33	67.4% Responses = 43	69.4% Responses = 49
<b>Ione Community Clinic</b>	93.5% Responses = 93	94.5% Responses = 110	94.2% Responses = 154
<b>Irrigon Medical Clinic</b>	74.8% Responses = 127	77.0% Responses = 148	72.7% Responses = 198
<b>Pioneer Memorial Clinic</b>	86.4% Responses = 81	87.9% Responses = 81	89.6% Responses = 135
<b>All Clinics Combined</b>	82.0% Responses = 334	83.4% Responses = 392	82.8% Responses = 536
<b>NRC Benchmark</b>	86.1%		

Would you recommend this service/department to your friends or family? (Net			
	October	June 1, 2025 to November	December
<b>Emergency Department</b>	65.2% Responses = 46	66.7% Responses = 57	71.2% Responses = 73
<b>NRC Benchmark</b>	80.5%		
<b>EMS</b>	100.0% Responses = 8	100.0% Responses = 8	77.8% Responses = 9
<b>HEPPNER/IRRIGON</b>	82.5%		
<b>Lab</b>	71.4% Responses = 35	70.2% Responses = 47	72.9% Responses = 59
<b>NRC Benchmark</b>	80.5%		
<b>Radiology</b>	60.0% Responses = 20	54.2% Responses = 22	57.7% Responses = 26
<b>NRC Benchmark</b>	80.9%		

## NRC HCAHPS

All HCAHPS are captured via a paper survey that is mailed to all admitted inpatients at Pioneer Memorial Hospital. CMS requires paper surveys for HCAHPS at this time.

Using any number from 0 to 10, where 0 is the worst hospital possible and 10 is the best hospital possible, what number would you use to rate this hospital during your stay?

June 1, 2025 to December 31, 2025	
<b>Inpatient</b>	<b>83.3%</b> Responses = 6
<b>NRC Average</b>	71.4%

Would you recommend this hospital to your friends and family?

June 1, 2025 to December 31, 2025	
<b>Inpatient</b>	<b>83.3%</b> Responses = 6
<b>NRC Average</b>	72.6%

2025	IRRIGON								HEPPNER								IONE				LEXINGTON			
	299				298				599				598				699				499			
	Dispatch to En Route	Response Time	Number of Runs	Number of Transports	Dispatch to En Route	Response Time	Number of Runs	Number of Transports	Dispatch to En Route	Response Time	Number of Runs	Number of Transports	Dispatch to En Route	Response Time	Number of Runs	Number of Transports	Dispatch to En Route	Response Time	Number of Runs	Number of Transports	Dispatch to En Route	Response Time	Number of Runs	Number of Transports
January	0.0	0.0	0	0	1.1	2.0	31	20	1.0	2.6	25	16	1.7	5.0	3	1	0.0	0.0	0	0	0.0	0.0	0	0
Transfers January	0.0	0.0	0	0	0.0	0.0	0	0	0.0	0.0	0	0	2.4	10.8	5	5	0.0	0.0	0	0	0.0	0.0	0	0
9-1-1 February	0.3	1.5	1	1	1.2	3.0	28	20	1.0	2.9	12	8	1.5	14.6	1	1	0.0	0.0	0	0	0.0	0.0	0	0
Transfers February	17.5	20.0	2	2	0.0	0.0	0	0	0.0	0.0	0	0	8.7	14.8	1	1	0.0	0.0	0	0	1.5	17.2	2	2
9-1-1 March	0.6	4.6	2	2	1.0	3.0	41	27	1.3	3.0	17	8	0.5	4.0	2	0	0.0	0.0	0	0	0.0	0.0	0	0
Transfers March	0.0	0.0	0	0	0.0	0.0	0	0	5.0	15.0	1	1	7.3	8.0	3	3	0.0	0.0	0	0	3.0	8.1	2	2
9-1-1 April	0.8	1.1	4	4	1.0	2.4	34	23	1.0	2.4	28	18	0.7	6.8	3	1	0.0	0.0	0	0	0.0	0.0	0	0
Transfers April	4.1	9.2	2	2	2.0	4.4	2	0	0.0	0.0	0	0	1.5	12.4	4	4	0.0	0.0	0	0	0.0	0.0	0	0
9-1-1 May	1.3	4.5	2	2	1.0	3.8	39	20	1.0	3.0	30	19	2.0	4.1	1	0	0.0	0.0	0	0	0.0	0.0	0	0
Transfers May	0.0	0.0	0	0	0.0	0.0	0	0	4.0	23.0	1	1	5.0	20.0	4	4	0.0	0.0	0	0	0.0	0.0	0	0
9-1-1 June	1.5	4.8	3	3	1.7	5.3	24	10	1.0	2.8	22	17	2.1	6.6	4	3	0.0	0.0	0	0	0.0	0.0	0	0
Transfers June	0.0	0.0	0	0	0.0	0.0	0	0	24.6	4.5	1	1	19.9	1.2	8	8	0.0	0.0	0	0	0.0	0.0	0	0
9-1-1 July	3.0	10.0	4	3	1.0	1.7	36	24	1.0	18.0	23	13	3.0	12.0	3	0	0.0	0.0	0	0	0.0	0.0	0	0
Transfers July	0.0	0.0	0	0	0.0	0.0	0	0	0.0	0.0	0	0	9.0	23.5	3	3	0.0	0.0	0	0	0.0	0.0	0	0
9-1-1 August	2.7	8.0	1	0	1.0	3.0	36	23	1.0	3.0	14	10	0.0	0.0	0	0	0.0	0.0	0	0	0.0	0.0	0	0
Transfers August	0.0	0.0	0	0	0.0	0.0	0	0	7.0	1.0	2	2	1.5	2.0	6	6	0.0	0.0	0	0	0.0	0.0	0	0
9-1-1 September	0.7	1.3	7	6	0.9	4.2	28	12	1.9	4.0	23	10	3.5	4.4	3	3	0.0	0.0	0	0	0.0	0.0	0	0
Transfers September	0.0	0.0	0	0	0.0	0.0	0	0	1.0	1.0	1	1	4.0	7.0	1	1	0.0	0.0	0	0	0.0	0.0	7	0
9-1-1 October	0.8	2.2	3	2	0.8	2.8	31	18	1.2	5.0	27	15	3.0	4.1	1	1	0.0	0.0	0	0	0.0	0.0	0	0
Transfers October	0.0	0.0	0	0	0.0	0.0	0	0	0.0	1.0	1	1	0.4	1.6	8	8	0.0	0.0	0	0	0.0	1.7	3	3
9-1-1 November	0.1	1.8	8	4	1.0	2.4	33	20	1.0	4.0	25	15	1.0	2.2	1	0	0.0	0.0	0	0	0.0	0.0	0	0
Transfers November	0.0	0.0	0	0	0.0	0.0	0	0	0.0	0.0	0	0	1.2	0.5	7	7	0.0	0.0	0	0	0.5	1.0	1	1
9-1-1 December	1.1	4.5	6	5	1.0	4.0	37	24	2.0	5.0	26	18	2.0	4.6	3	0	0.0	0.0	0	0	0.0	0.0	0	0
Transfers December	0.0	0.0	0	0	0.0	0.0	0	0	0.0	0.0	0	0	1.5	0.5	1	1	0.0	0.0	0	0	1.1	0.5	1	1
<b>TOTAL</b>			45	36			400	241			279	174			76	61			0	0			16	9

Dispatch to en route means the length of time between when the ambulance is dispatched to when the ambulance leaves the garage.

Response time means the length of time between the notification to the ambulance and the arrival of the ambulance at the incident scene.\*

\*Note that response times are not adjusted for miles traveled.



**MORROW COUNTY  
HEALTH DISTRICT**  
Excellence in Healthcare

PO BOX 9  
Heppner OR 97836  
Tel: 541-676-9133  
Toll Free: 1-800-737-4113  
www.morrowcountyhealthdistrict.org

**TO: Morrow County Health District Board of Directors**

**FROM: Bob Houser, Interim CEO, FACHE**

**SUBJECT: CEO REPORT TO THE BOARD**

**DATE: January 26<sup>th</sup>, 2026**

---

1. **Recruitment/Staffing:**
  - a. Update on CEO phone interviews
  - b. Dates for Feb. TEAM interviews with top 10 candidates
  - c. Patty Rill has been hired a Dietary Manager
  - d. Laura Lawson has been hired as Clinic Manager for Pioneer Memorial Clinic
  
2. **Additional employees needed:** Discharge Coordinator/Referrals @Pioneer Memorial Clinic, Chief Executive Officer, Swing bed Coordinator, Patient Account Representative.
  
3. **Community Benefit Request:** None at this time
  
4. **Miscellaneous:**
  - a. South exit doors were finished being installed on January 13<sup>th</sup>. OHA will be notified of completion which takes care of deficiency Life Safety Code tag # K 233.
  - b. On campus storage shed has been completed. It is now weather proof, cat proof and can be used for storage.
  - c. Business is Brewing was held on 1/22/26 from 9-11:00 am at Pioneer Memorial Clinic. Heppner Chamber of Commerce served cinnamon rolls and coffee for the event. This event was held for the public to meet our providers at PMC.

**CEO Itinerary:**

The CEO Itinerary for February is attached. Please keep in mind this itinerary can change from day to day but I can always be reached by call my cell phone, 541-620-0610.

Pioneer Memorial Hospital & Nursing Facility	Pioneer Memorial Home Health & Hospice	Pioneer Memorial Clinic	Irrigon Medical Clinic	Ione Community Clinic	Morrow County Ambulance
P – (541) 676-9133	P – (541) 676-2946	P – (541) 676-5504	P – (541) 922-5880	P – (541) 422-7128	P – (541) 676-9133
F – (541) 676-2901	F – (541) 676-9017	F – (541) 676-9025	F – (541) 922-5881	F – (541) 422-7145	F – (541) 676-2901
TDD – (541) 676-2908					

# February 2026

## CEO ITINERARY

February 2026						
Su	Mo	Tu	We	Th	Fr	Sa
1	2	3	4	5	6	7
8	9	10	11	12	13	14
15	16	17	18	19	20	21
22	23	24	25	26	27	28

March 2026						
Su	Mo	Tu	We	Th	Fr	Sa
1	2	3	4	5	6	7
8	9	10	11	12	13	14
15	16	17	18	19	20	21
22	23	24	25	26	27	28
29	30	31				

SUNDAY	MONDAY	TUESDAY	WEDNESDAY	THURSDAY	FRIDAY	SATURDAY
Feb 1	2	3	4	5	6	7
	10:00am Hospital Association of Oregon CEO calls - 2026 meeting series (Microsoft Teams Meeting) - Wendy Gale	8:30am Orientation (PMC Conference) 8:30am <del>Maternal Infection</del> 9:00am Infection 10:45am Senior Meals 11:00am EOCCO Board	Possible CEO TEAM interviews	Possible CEO TEAM interviews	11:00am FW: Oregon CAH CEO Peer Group (https://ohsu.webex.com/ohsu/j.php?MTID=m8d79280b8592a77beef194591dc5c100) - Sarah Andersen	
8	9	10	11	12	13	14
	9:00am Canceled: Weekly Compliance Check-in (Bob's) 12:00pm Foundation Meeting (West) 1:00pm Canceled: COVID Meeting	8:00am ER/Trauma Meeting (In-person) (PMC Conference Room (US)) - Sheryl L 2:00pm Oregon Clinically Integrated Network Bi-Weekly	Possible CEO TEAM interviews	7:30 (CABO) Possible TEAM CEO interviews		
15	16	17	18	19	20	21
	3:00pm Eastern Oregon District Hospital CEO Call (Microsoft Teams Meeting) - Rayanna Mitchell	8:30am Orientation (PMC Conference Room) - Elias Ramirez 8:30am Communications 9:00am Canceled: Weekly Compliance	Possible Team CEO interviews	Possible Team CEO interviews	Possible Team CEO interviews	
22	23	24	25	26	27	28
	10:00am Hospital Association of Oregon CEO calls - 2026 meeting series (Microsoft Teams Meeting) - Wendy Gale	9:00am Monthly Department Head Meeting (PMC Conference Room) - 9:00am Canceled: Weekly Compliance Check-in (Bob's)	8:00am WCVEDG Regular Board Meeting (111 N Main) 1:00pm Clinic Quality Review (CEO Office) - 2:00pm Oregon Clinically Integrated	Possible Team CEO interviews		



**MORROW COUNTY  
HEALTH DISTRICT**  
Excellence in Healthcare

## Board Meeting Calendar 2026

Date	Time	Location
January 26, 2026	6:30 p.m.	Irrigon Library 490 NE Main Ave, <b>Irrigon</b> , OR 97844
February 23, 2026	6:30 p.m.	Ione Fire Station 140 W Main Street, <b>Ione</b> , OR 97843
March 30, 2026	6:30 p.m.	Pioneer Memorial Clinic – Conference Room 130 Thompson Street, <b>Heppner</b> , OR 97836
April 27, 2026	6:30 p.m.	Boardman City Hall 200 City Center Drive, <b>Boardman</b> , OR 97818
May 18, 2026	6:30 p.m.	Morrow County Grain Growers – Conference Room 350 Main Street, <b>Lexington</b> , OR 97839
June 29, 2026	6:30 p.m.	Irrigon Library 490 NE Main Ave, <b>Irrigon</b> , OR 97844
July 27, 2026	6:30 p.m.	Ione Fire Station 140 W Main Street, <b>Ione</b> , OR 97843
August 31, 2026	6:30 p.m.	Pioneer Memorial Clinic – Conference Room 130 Thompson Street, <b>Heppner</b> , OR 97836
September 28, 2026	6:30 p.m.	Boardman City Hall 200 City Center Drive, <b>Boardman</b> , OR 97818
October 26, 2026	6:30 p.m.	Morrow County Grain Growers – Conference Room 350 Main Street, <b>Lexington</b> , OR 97839
November 30, 2026	6:30 p.m.	Irrigon Library 490 NE Main Ave, <b>Irrigon</b> , OR 97844
December 28, 2026	6:30 p.m.	Ione Fire Station 140 W Main Street, <b>Ione</b> , OR 97843

CURRENT MONTH	LAST MONTH	DOLLAR VARIANCE		CURRENT YEAR TO DATE	BUDGET YEAR TO DATE	DOLLAR VARIANCE
<b>PATIENT SERVICES REVENUE</b>						
127,392	230,701	(103,309)	INPATIENT REVENUE	1,015,028	1,015,493	(465)
595,267	392,851	202,416	OUTPATIENT REVENUE	3,121,368	4,399,668	(1,278,301)
309,109	197,413	111,696	CLINIC REVENUE	1,504,264	1,633,786	(129,522)
91,937	112,532	(20,595)	HOME HEALTH & HOSPICE REVENUE	584,706	587,514	(2,808)
685	(79)	764	ORACLE HEALTH UNALIASED	946	-	946
<b>1,124,390</b>	<b>933,418</b>	<b>190,973</b>	<b>TOTAL GROSS PATIENT REVENUE</b>	<b>6,226,311</b>	<b>7,636,461</b>	<b>(1,410,149)</b>
1,220	2,200	(980)	PROVISION FOR BAD DEBTS	13,345	-	13,345
169,627	(158,070)	327,697	CONTRACTUALS & ADJUSTMENTS	(148,340)	1,466,212	(1,614,552)
<b>170,848</b>	<b>(155,870)</b>	<b>326,718</b>	<b>TOTAL REVENUE DEDUCTIONS</b>	<b>(134,995)</b>	<b>1,466,212</b>	<b>(1,601,207)</b>
<b>1,295,238</b>	<b>777,548</b>	<b>517,690</b>	<b>TOTAL NET PATIENT REVENUE</b>	<b>6,091,317</b>	<b>9,102,673</b>	<b>(3,011,356)</b>
<b>334,658</b>	<b>334,658</b>	-	<b>TAX REVENUE</b>	<b>1,872,040</b>	<b>1,805,937</b>	<b>66,103</b>
<b>37,233</b>	<b>3,203</b>	<b>34,030</b>	<b>OTHER OPERATING REVENUE</b>	<b>226,909</b>	<b>181,883</b>	<b>45,026</b>
<b>1,667,129</b>	<b>1,115,409</b>	<b>551,720</b>	<b>TOTAL OPERATING REVENUE</b>	<b>8,190,266</b>	<b>11,090,493</b>	<b>(2,900,227)</b>
<b>OPERATING EXPENSES</b>						
1,033,205	916,610	116,595	SALARIES & WAGES	5,446,037	6,036,789	(590,752)
285,210	269,302	15,908	EMPLOYEE BENEFITS & TAXES	1,630,789	2,163,823	(533,034)
145,916	90,874	55,043	PROFESSIONAL FEES	835,563	867,357	(31,794)
102,905	77,355	25,550	SUPPLIES & MINOR EQUIPMENT	502,969	686,338	(183,369)
3,159	7,340	(4,181)	EDUCATION	27,620	32,868	(5,248)
3,157	3,053	104	RECRUITING & ADVERTISING	44,136	52,352	(8,216)
26,498	32,338	(5,839)	REPAIRS & MAINTENANCE	155,141	121,528	33,613
222,496	170,164	52,332	PURCHASED SERVICES	1,147,670	946,819	200,851
77,510	75,231	2,279	DEPRECIATION	473,589	553,716	(80,127)
15,265	11,513	3,752	TRAVEL	102,396	94,882	7,514
17,328	17,130	198	UTILITIES, PHONE & PROPANE	100,146	103,440	(3,294)
20,546	20,546	0	INSURANCE	117,760	110,606	7,154
5,028	1,954	3,074	TAXES & LICENSES	26,372	14,565	11,807
36,410	22,588	13,822	INTEREST	150,250	141,843	8,407
3,240	4,134	(894)	DUES & SUBSCRIPTIONS	28,018	23,790	4,228
24,221	77,307	(53,086)	OTHER EXPENSES	152,720	116,874	35,846
<b>2,022,094</b>	<b>1,797,438</b>	<b>224,656</b>	<b>TOTAL OPERATING EXPENSES</b>	<b>10,941,175</b>	<b>12,067,590</b>	<b>(1,126,415)</b>
<b>(354,965)</b>	<b>(682,029)</b>	<b>327,064</b>	<b>GAIN/LOSS FROM OPERATIONS</b>	<b>(2,750,909)</b>	<b>(977,097)</b>	<b>(1,773,812)</b>
<b>128,915</b>	<b>138,735</b>	<b>(9,820)</b>	<b>NON-OPERATING NET GAIN/LOSS</b>	<b>831,250</b>	<b>1,077,807</b>	<b>(246,557)</b>
<b>(226,050)</b>	<b>(543,293)</b>	<b>317,244</b>	<b>NET INCOME/LOSS</b>	<b>(1,919,659)</b>	<b>100,710</b>	<b>(2,020,369)</b>

<b>ASSETS</b>	<b>CURRENT YTD</b>
<i>CURRENT ASSETS</i>	
<b>TOTAL CASH &amp; INVESTMENTS</b>	<b>3,766,168</b>
ORACLE HEALTH A/R	2,916,687
THRIVE A/R	434,006
CENTRIQ HOSPITAL, SWING & CLINICS A/R	(603)
CENTRIQ HOME HEALTH & HOSPICE A/R	-
GROSS PATIENT RECEIVABLES	<b>3,350,090</b>
LESS CLEARING ACCOUNTS	41
LESS ALLOWANCE FOR UNCOLLECTABLE	(689,590)
LESS ALLOWANCE FOR CONTRACTUALS	(29,179)
<b>NET PATIENT ACCOUNTS RECEIVABLE</b>	<b>2,631,362</b>
ASSIGNED ACCOUNTS	-
EMPLOYEE ADVANCES	13,678
EMPLOYEE PURCHASES RECEIVABLE	2,407
RECEIVABLE-340B FR/SUN RX	47,792
TAXES RECEIVABLE-PRIOR YR	28,034
TAXES RECEIVABLE-CURRENT YEAR	(1,613,767)
OTHER RECEIVABLES	9,302
GRANTS RECEIVABLE	-
MC/MD RECEIVABLE	1,071,223
ASSISTED LIVING RECEIVABLE	5,857
<b>TOTAL OTHER RECEIVABLES</b>	<b>(435,473)</b>
INVENTORY-GENERAL	155,382
INVENTORY LAB & RX	282,212
PREPAID EXPENSES	-
PREPAID INSURANCE	29,406
PREPAID-OTHER	121,984
<b>TOTAL INVENTORY &amp; PREPAID</b>	<b>588,984</b>
<b>TOTAL CURRENT ASSETS</b>	<b>6,551,041</b>
<i>LONG TERM ASSETS</i>	
LAND	119,671
LAND IMPROVEMENTS	321,575
BUILDING & IMPROVEMENTS	5,922,706
EQUIPMENT	7,851,911
SUBSCRIPTION BASED ASSETS	3,668,860
CONSTRUCTION IN PROGRESS	440,159
LESS ACCUMULATED DEPRECIATION	(11,877,887)
<b>TOTAL LONG TERM ASSETS</b>	<b>6,446,993</b>
<b>TOTAL ASSETS</b>	<b>12,998,034</b>

**LIABILITIES**

*CURRENT LIABILITIES*

**TOTAL ACCOUNTS PAYABLE** 517,308

MISC PAYABLE -

SHORT TERM NOTES PAYABLE -

**TOTAL OTHER PAYABLE** -

**TOTAL ACCRUED WAGES & LIABILITIES** 1,863,532

ACCRUED INTEREST 2,949

SUSPENSE ACCOUNT 98,782

TCAA SUSPENSE 615

DEFERRED INCOME 1,506

MC/MD SETTLEMENT PAYABLE 512,920

CONTINGENCY SETTLEMENT PAYABLE 100,000

**TOTAL OTHER LIABILITIES** 716,772

**TOTAL CURRENT LIABILITIES** 3,097,612

*LONG TERM LIABILITIES*

SUBSCRIPTION BASED LIABILITIES 3,009,705

BEO 2019 BOILER LOAN -

BEO 2018 BOARDMAN BLDG LOAN 42,323

BEO LOAN FOR AMBULANCE -

MORROW CO 2018 BRDMAN BLDG LN 22,961

BEO IMC EXPANSION 2018 165,589

GEODC 2021 HOUSE LOAN -

MORROW CO 2021 CHURCH LOAN 38,880

BEO REFINANCE OF USDA LOAN 700,721

BEO 2024 CAPITAL LOAN 892,947

**TOTAL LONG TERM LIABILITIES** 4,873,125

**EQUITY/FUND BALANCE**

GENERAL FUND UNRESTRICTED BAL 6,946,957

NET INCOME/LOSS (1,919,659)

**EQUITY/FUND BALANCE** 5,027,298

**TOTAL LIABILITIES & EQUITY/FUND BALANCE** 12,998,034

CURRENT MONTH	LAST MONTH	DOLLAR VARIANCE		CURRENT YEAR TO DATE	BUDGET YEAR TO DATE	DOLLAR VARIANCE
<b>PATIENT SERVICES REVENUE</b>						
230,701	227,795	2,906	INPATIENT REVENUE	887,636	844,404	43,232
392,851	593,558	(200,708)	OUTPATIENT REVENUE	2,526,101	3,658,420	(1,132,319)
197,413	224,063	(26,650)	CLINIC REVENUE	1,195,155	1,358,529	(163,374)
112,532	121,857	(9,325)	HOME HEALTH & HOSPICE REVENUE	492,768	488,530	4,238
(79)	16	(96)	ORACLE HEALTH UNALIASED	261	-	261
<b>933,418</b>	<b>1,167,290</b>	<b>(233,873)</b>	<b>TOTAL GROSS PATIENT REVENUE</b>	<b>5,101,921</b>	<b>6,349,883</b>	<b>(1,247,962)</b>
2,200	2,177	23	PROVISION FOR BAD DEBTS	12,125	-	12,125
(158,070)	(49,535)	(108,536)	CONTRACTUALS & ADJUSTMENTS	(317,967)	1,219,187	(1,537,154)
<b>(155,870)</b>	<b>(47,358)</b>	<b>(108,513)</b>	<b>TOTAL REVENUE DEDUCTIONS</b>	<b>(305,842)</b>	<b>1,219,187</b>	<b>(1,525,029)</b>
<b>777,548</b>	<b>1,119,933</b>	<b>(342,385)</b>	<b>TOTAL NET PATIENT REVENUE</b>	<b>4,796,079</b>	<b>7,569,070</b>	<b>(2,772,992)</b>
<b>334,658</b>	<b>300,681</b>	<b>33,977</b>	<b>TAX REVENUE</b>	<b>1,537,382</b>	<b>1,501,676</b>	<b>35,706</b>
<b>3,203</b>	<b>169,620</b>	<b>(166,417)</b>	<b>OTHER OPERATING REVENUE</b>	<b>189,676</b>	<b>151,239</b>	<b>38,437</b>
<b>1,115,409</b>	<b>1,590,234</b>	<b>(474,825)</b>	<b>TOTAL OPERATING REVENUE</b>	<b>6,523,137</b>	<b>9,221,986</b>	<b>(2,698,849)</b>
<b>OPERATING EXPENSES</b>						
916,610	966,754	(50,144)	SALARIES & WAGES	4,412,832	5,019,721	(606,889)
269,302	287,167	(17,866)	EMPLOYEE BENEFITS & TAXES	1,345,579	1,799,266	(453,687)
90,874	109,973	(19,099)	PROFESSIONAL FEES	689,646	721,226	(31,580)
77,355	97,620	(20,265)	SUPPLIES & MINOR EQUIPMENT	400,064	570,705	(170,641)
7,340	3,191	4,149	EDUCATION	24,461	27,331	(2,870)
3,053	4,106	(1,053)	RECRUITING & ADVERTISING	40,979	43,532	(2,552)
32,338	21,670	10,667	REPAIRS & MAINTENANCE	128,643	101,053	27,590
170,164	200,639	(30,475)	PURCHASED SERVICES	925,175	787,301	137,874
75,231	80,224	(4,993)	DEPRECIATION	396,079	460,427	(64,347)
11,513	28,147	(16,634)	TRAVEL	87,131	78,896	8,235
17,130	15,936	1,194	UTILITIES, PHONE & PROPANE	82,818	86,013	(3,195)
20,546	20,546	-	INSURANCE	97,214	91,971	5,242
1,954	15,106	(13,152)	TAXES & LICENSES	21,344	12,111	9,233
22,588	22,493	95	INTEREST	113,840	117,946	(4,106)
4,134	5,316	(1,182)	DUES & SUBSCRIPTIONS	24,778	19,782	4,996
77,307	11,553	65,754	OTHER EXPENSES	128,499	97,184	31,315
<b>1,797,438</b>	<b>1,890,440</b>	<b>(93,002)</b>	<b>TOTAL OPERATING EXPENSES</b>	<b>8,919,081</b>	<b>10,034,463</b>	<b>(1,115,382)</b>
<b>(682,029)</b>	<b>(300,206)</b>	<b>(381,823)</b>	<b>GAIN/LOSS FROM OPERATIONS</b>	<b>(2,395,944)</b>	<b>(812,478)</b>	<b>(1,583,467)</b>
<b>138,735</b>	<b>132,708</b>	<b>6,027</b>	<b>NON-OPERATING NET GAIN/LOSS</b>	<b>702,335</b>	<b>896,220</b>	<b>(193,885)</b>
<b>(543,293)</b>	<b>(167,498)</b>	<b>(375,795)</b>	<b>NET INCOME/LOSS</b>	<b>(1,693,609)</b>	<b>83,743</b>	<b>(1,777,352)</b>



**MORROW COUNTY  
HEALTH DISTRICT**  
Excellence in Healthcare

PO BOX 9  
Heppner OR 97836  
Tel: 541-676-9133  
Toll Free: 1-800-737-4113  
[www.morrowcountyhealthdistrict.org](http://www.morrowcountyhealthdistrict.org)

December 16, 2025

Oregon Secretary of  
State Audits Division  
255 Capitol St. NE, Suite  
#180  
Salem, OR 97310

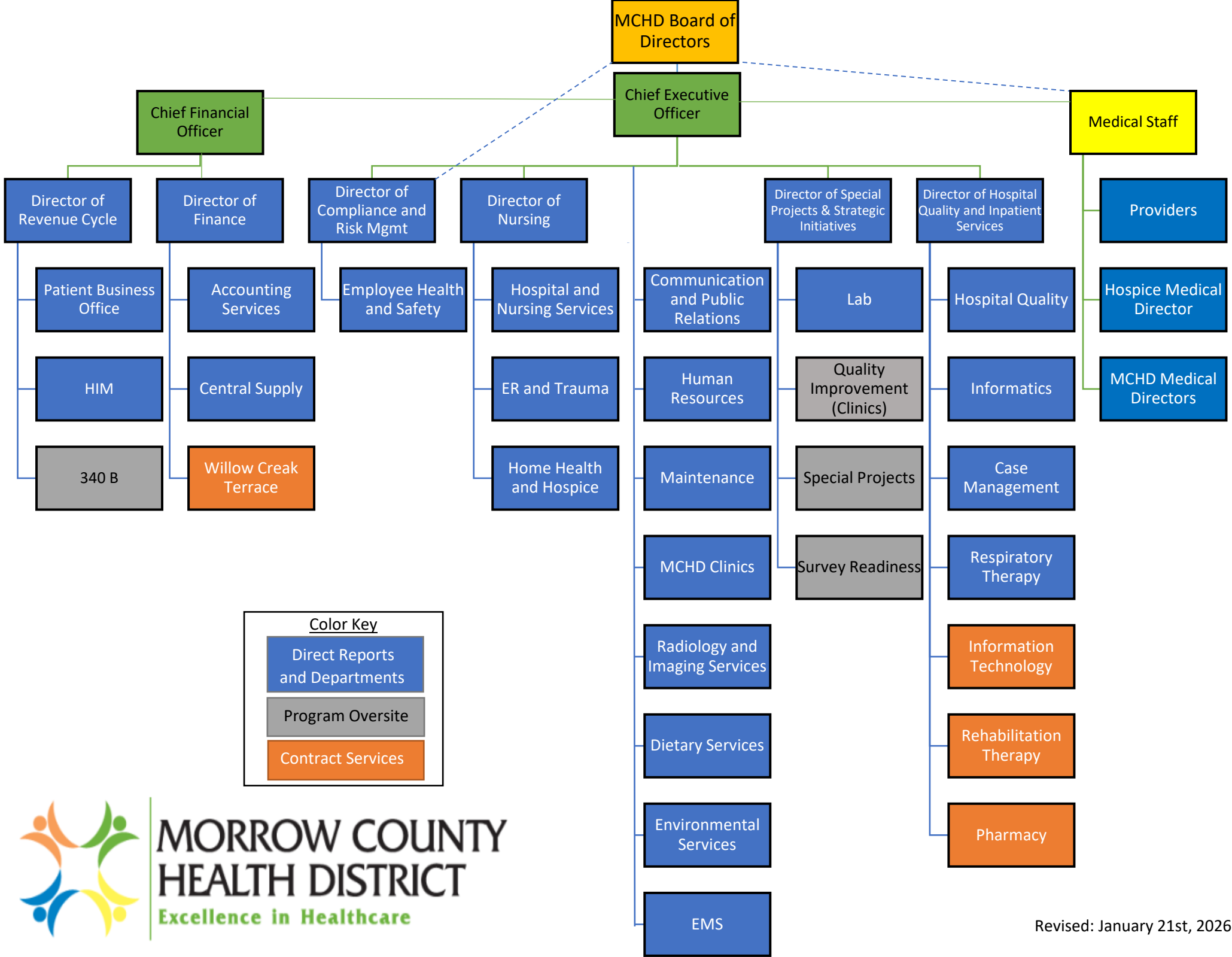
**Plan of Action**

Morrow County Health District respectfully submits the following corrective action plan in response to deficiencies reported in our audit of fiscal year end June 30, 2025. The audit was completed by the independent auditing firm WIPFLI LLP and they reported the deficiencies listed below. The plan of action was adopted by the Chief Executive Officer, as indicated by signature below.

The deficiencies are listed below, including the adopted plan of action and timeframe for each.

1. Deficiency #1

- a. Significant Deficiency – Financial statement preparation and accompanying note disclosures. The District relies upon the auditor to compile the financial statements and notes. As part of professional services from WIPFLI, LLP for the year ending June 30, 2025 the assisted in drafting the basic financial statements and related notes. This condition is not unusual in an organization of its size.
- b. The plan of action was to hire a replacement Chief Financial Officer and that process has been completed.
- c. The Chief Financial Officer will start full-time with the organization as of January 5, 2026.



**Color Key**

- Direct Reports and Departments (Blue box)
- Program Oversight (Gray box)
- Contract Services (Orange box)



MORROW COUNTY HEALTH DISTRICT  
MORROW COUNTY, OREGON

A RESOLUTION OF THE MORROW COUNTY ) RESOLUTION  
HEALTH DISTRICT RELATING TO ) NO. 152-0126  
AUTHORIZATION OF PERSONS ALLOWED TO )  
SIGN DISTRICT CHECKS AND VOUCHERS )

WHEREAS, the need has arisen to change the authorized signers on all District checking and savings accounts;

NOW, THEREFORE, BE IT RESOLVED BY THE BOARD OF THE MORROW COUNTY HEALTH DISTRICT:

1. Two of the following person's signatures must appear on all District checks and vouchers:

Janet Greenup, Chairman of the Board

Annetta Spicer, Treasurer of the Board

Bob Houser, Chief Executive Officer

Rick Worden, Chief Financial Officer

Staci Hedman, Revenue Cycle Director

2. Effective as of the day of signing, all previous authorizations regarding the signing of District checks and vouchers are withdrawn.

PASSED BY A VOTE OF THE BOARD on the \_\_\_\_ day of January, 2026.

\_\_\_\_\_  
\_\_\_\_\_

\_\_\_\_\_  
\_\_\_\_\_